

Portrait of a Local Artist

"I often travel through the county and stop near Bridport to marvel at the fantastic views across the fields to the sea."

Colin Merrin is an elected member of the Royal Watercolour Society and his work is in Her Majesty The Queen's collection. He lives in Hampshire and regularly exhibits in the county.

His was the most expensive painting to be shown in the Forest Connections exhibition at the New Forest Centre Gallery in Lyndhurst, which ran until July. And, priced at £3,250, it sold in the first week.

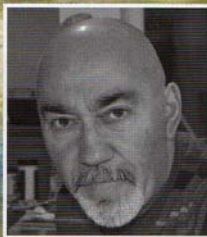
"I've been on holiday to Dorset and painted some watercolours of Charmouth," says Colin. "I often travel through the county and stop near Bridport to marvel at the fantastic views across the fields to the sea."

He adds: *"I used to live in Sussex while my partner lived in Hampshire. I would drive down the A27 at various times in the week to see her, so I decided to move to Southsea to be close to her. It proved to be an excellent decision as I live close to Lynn, the sea and the South Downs. I've also acquired the biggest studio I've ever had."*

Colin has always been an artist and had his first solo exhibition in London in 1981. Aged 23 he was in a pub in Chelsea, worse for wear and recalls pontificating about the state of the art world to impress a girl he had just met. *"I became aware that the chap standing listening and nodding in agreement was Lucian Freud, the British painter who died in 2011. He was known chiefly for his thickly impastoed portrait and figure paintings and was widely considered the pre-eminent British artist of his time."*

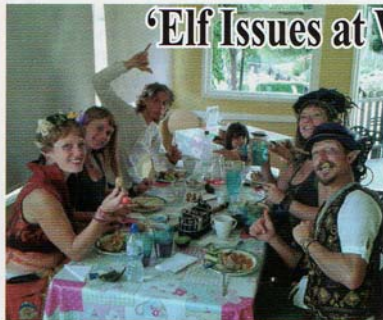
During 2015 Colin will be showing in the various RWS exhibitions and the United Society of Artists. Colin runs weekly Wednesday evening classes in painting and drawing from his Southsea studio. These may extend to another evening in 2015 to accommodate more students.

www.colinmerrin.co.uk



'After the rain, towards evening'
by Colin Merrin.

'Elf Issues at Wimborne Model Town!



Having just been awarded a five star hygiene rating by East Dorset District Council, Wimborne Model Town tea room had a surprise elf encounter with the cast of Storylight Theatre arriving for tea before their recent performance in the Town's illuminated Sensory Garden. *"We were delighted that the elves and fairies were happy with our standard menu; some even wanted special coffees from our bean to cup machine"* Greg Hoar, General Manager, commented. *"They put on a fabulous show although we did have to spend time afterwards cleaning fairy dust off the seats."* The Model Town tea room is open to all until 1st November.