



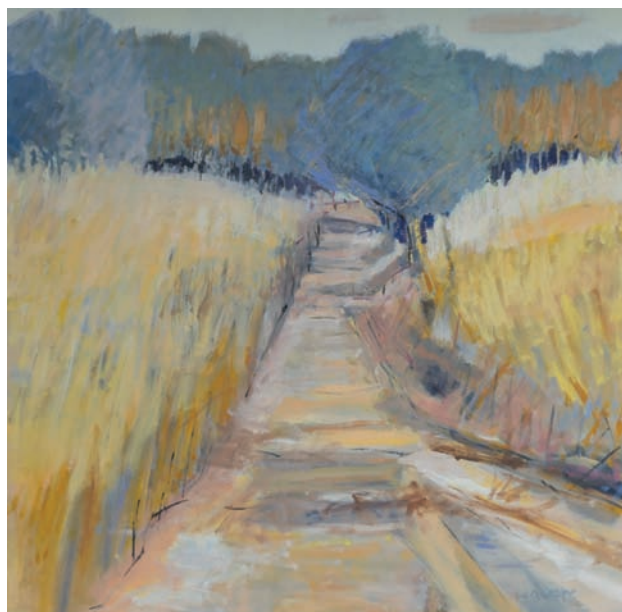
Umbrella Tree, Fading Light



Autumn Trees



Landscape Haze with Sunflowers



Track with Autumn Colours

# Working with colour

## Local landscapes and autumn shades feature in the latest work by Chrissie Havers

Cambridge artist Chrissie Havers enjoys putting together interesting and varied colour systems in her work.

"I paint in oils on canvas and am mainly interested in the landscape, finding inspiration both locally in Cambridge and Suffolk as well as abroad. Recently, I have been exploring the still life genre which appeals to me as an indoor landscape."

As a member of Creative Coverage, which works with selected professional artists and craftspeople, Chrissie will be showing her latest paintings in one of their mixed exhibitions at Chipping Norton Theatre in Oxfordshire from November 13 to January 14. "It is quite rare to be invited to take part in a two-month long exhibition, which allows a good amount of time for a new audience to see my work," she says.

Chrissie, a tutor at the Wimbish Art Group in Saffron Walden, is inspired by the work of Pierre Bonnard as well as modern painters William Selby and Hugo Grenville.

In the summer her work appeared at the Babylon Gallery in Ely and a further exhibition is planned at the Apex in Bury St Edmunds in December.  
[www.chrissiehavers.com](http://www.chrissiehavers.com)  
[www.TinyArtCards.gallery](http://www.TinyArtCards.gallery)